

MONTHLY MEMBERSHIP PROGRESS REPORT

LOCATION ARIZONA

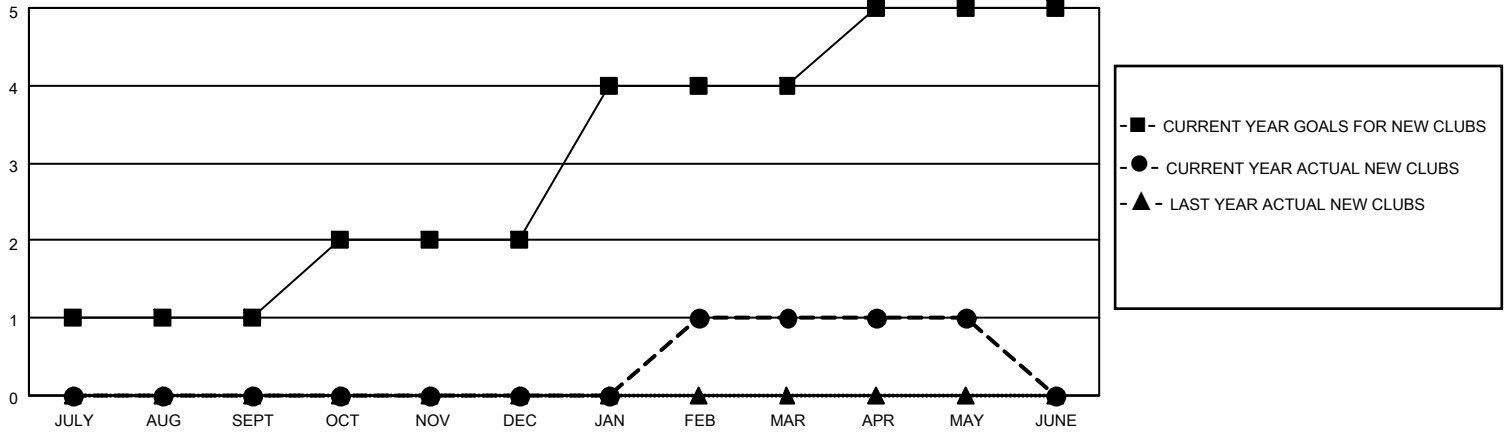
District 21 S

Results as of: 5/31/2021

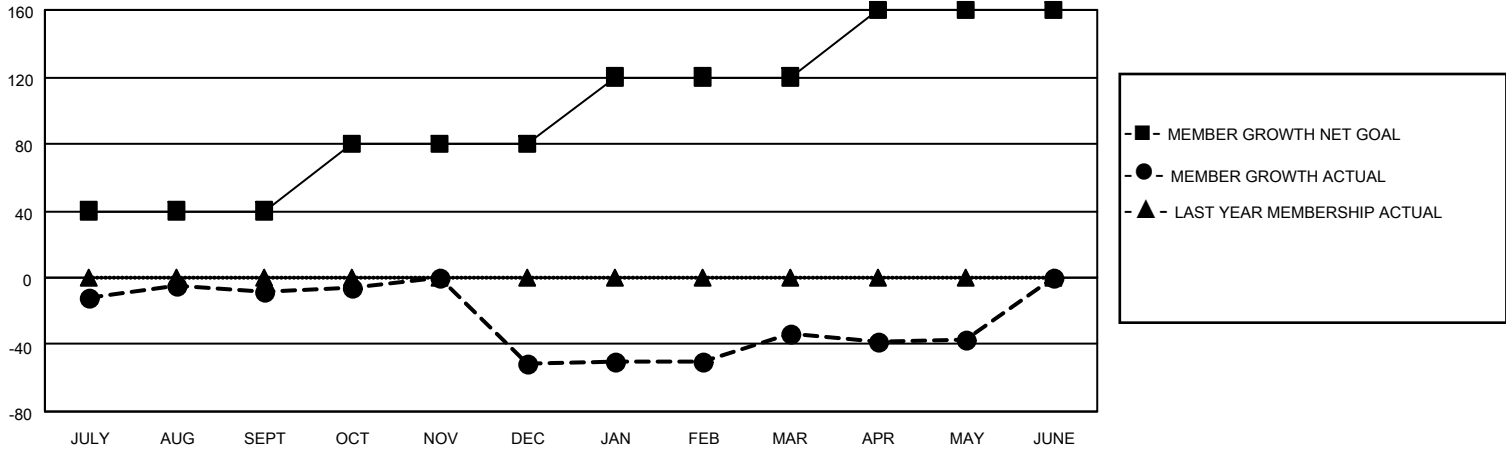
Clubs			
RESULTS FOR 2020-2021			
QUARTER	NEW CLUB GOAL	NEW CLUBS	DROPPED CLUBS
JULY/AUG/SEPT	1	0	0
OCT/NOV/DEC	1	0	0
JAN/FEB/MAR	2	1	0
APR/MAY/JUNE	1	0	0

Members			
RESULTS FOR 2020-2021			
QUARTER	MEMBER GROWTH NET GOAL	MEMBER GROWTH ACTUAL	DROPPED MEMBERS ACTUAL (including transfers)
JULY/AUG/SEPT	40	65	56
OCT/NOV/DEC	40	39	77
JAN/FEB/MAR	40	97	68
APR/MAY/JUNE	40	17	20

GOALS AND ACTUAL NEW CLUBS CUMULATIVE



GOALS AND ACTUAL MEMBERS CUMULATIVE



DROPPED CLUBS: 0	26 CLUBS OF 51 ADDED 1 OR MORE NEW MEMBERS	<u>GENDER DISTRIBUTION</u> MALE 644 (54.03%) FEMALE 548 (45.97%)
<u>DROPPED MEMBERS</u> DECEASED 26 CLUB CANCELLED 0 OTHER 195 <hr/> TOTAL 221	CLICK HERE FOR CUMULATIVE MEMBERSHIP DATA	TOTAL FAMILY UNIT MEMBERS 297 FAMILY MEMBERS PAYING HALF DUES 151